

ABEL HMQ-M-80-2000

Higher Overall Efficiency

Your Mining Specialist



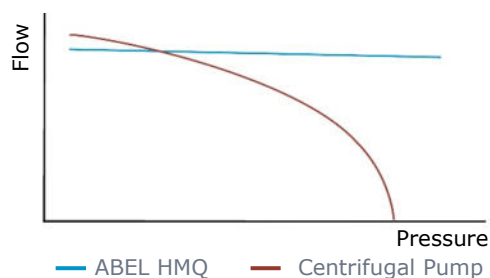
Filter Press Feed

New HMQ model for more efficient feeding

Solution for feeding membrane filter press

Our new model HMQ-M-80-2000 is able to supply high flow rates to fill membrane filter presses quickly. Due to minimal wearing parts and its design, which favors low wear, the HMQ can keep production efficiency constant over long terms.

With centrifugal pumps, efficiency decreases with increasing cycles due to wear. Compared with centrifugal pumps, ABEL HMQs have a higher overall efficiency because **HMQs flow rate is independent of back pressure.**



Benefits HMQ-M-80-2000

- Efficiency up to 90%
- 24/7 operational availability
- Reliability for critical processes
- Solid content up to 75%
- Accommodates a wide range of particle sizes
- Pump can run dry
- Low power consumption
- Strokes per minute are low and ensure a low mechanic wear

Hydraulic Piston Diaphragm Pump

Pump Type: **HMQ-M-80-2000**

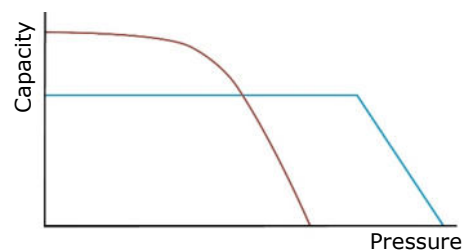
Pressure: max. 8 bar (116 psi)

Flow rate: max. 250 m³/h (1100 GPM)

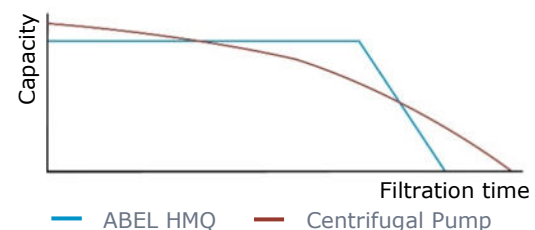
Motor: max. 75 kW (100 HP)

Included: Pulsation dampener
Suction flow stabilizer
Diaphragm monitoring

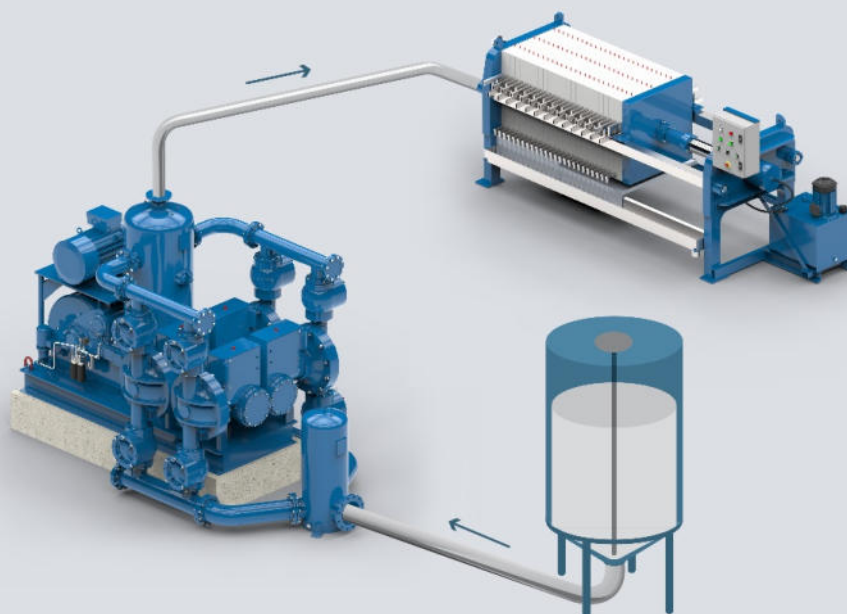
Optional: Smart Pump Assistant



- HMQ achieve high pressure even over long term
- Constant filter cake dryness



- HMQ achieve short and constant filter cycles due to minimal wear
- High production efficiency is ensured



Further Mining Applications for ABEL HMQ

One model - Many solutions

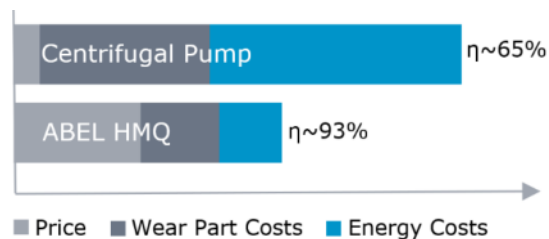
Thickener Underflow

In mining especially, the process of the thickening is an important stage and as a consequence of the product to be conveyed, many pumps fail in that task.

Positive displacement pumps are ideal for thickener underflow applications. Unlike centrifugal pumps in this application, the **HMQ does not require any seal water**. This fact lowers operating costs and makes the process more efficient.



Cost Comparison



Backfilling

The new HMQ is an alternative to avoid sedimentation and therefore increasing pressure losses at pipeline in a gravitational process. HMQ pushes the paste to the end of the stope.

- HMQ is capable of pumping viscous tailings
- Pre-formed diaphragm operates at a low speed and thus achieves a long service life

Tailings Transfer

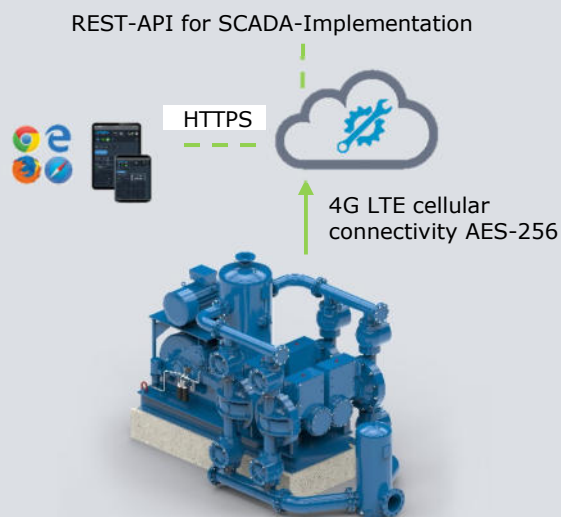
- HMQ ensure maximum operating availability and low wear
- Design and materials are adapted to the characteristics of tailings like high solid content, sedimentation and abrasiveness

The new HMQ pump is capable of pumping slurries with high yield stress, even when the medium is presented as paste.

ABEL HMQ Performance Range



Structure - Smart Pump Assistant



Benefits - Smart Pump Assistant

- 24/7 Online Pump Monitoring
- 24/7 Real-Time alerts by SMS or E-Mail
- Access via Browser or App
- Historical Trends
- Data export to multiple formats
- Maintenance Planner

What is it good for?

- Reduction of OPEX costs
- Optimization of pump performance
- Early detection of potentially critical situation

The pumping solution for your industry:

- Mining
- Water and Wastewater
- Ceramics
- Chemistry
- Oil and gas
- Energy industry
- Corrugated board
- Paint and varnish
- Petrochemical

Diaphragm Pumps
Solids Handling Pumps
High Pressure Pumps
Marine Pumps

United States and Canada

ABEL Pumps, L.P.
+1 (412) 741 3222
abelpumpsus@idexcorp.com

Spain, Portugal, Morocco and Latin America

ABEL Equipos S.A.
+34 (91) 715 4848
aeq-mail@idexcorp.com